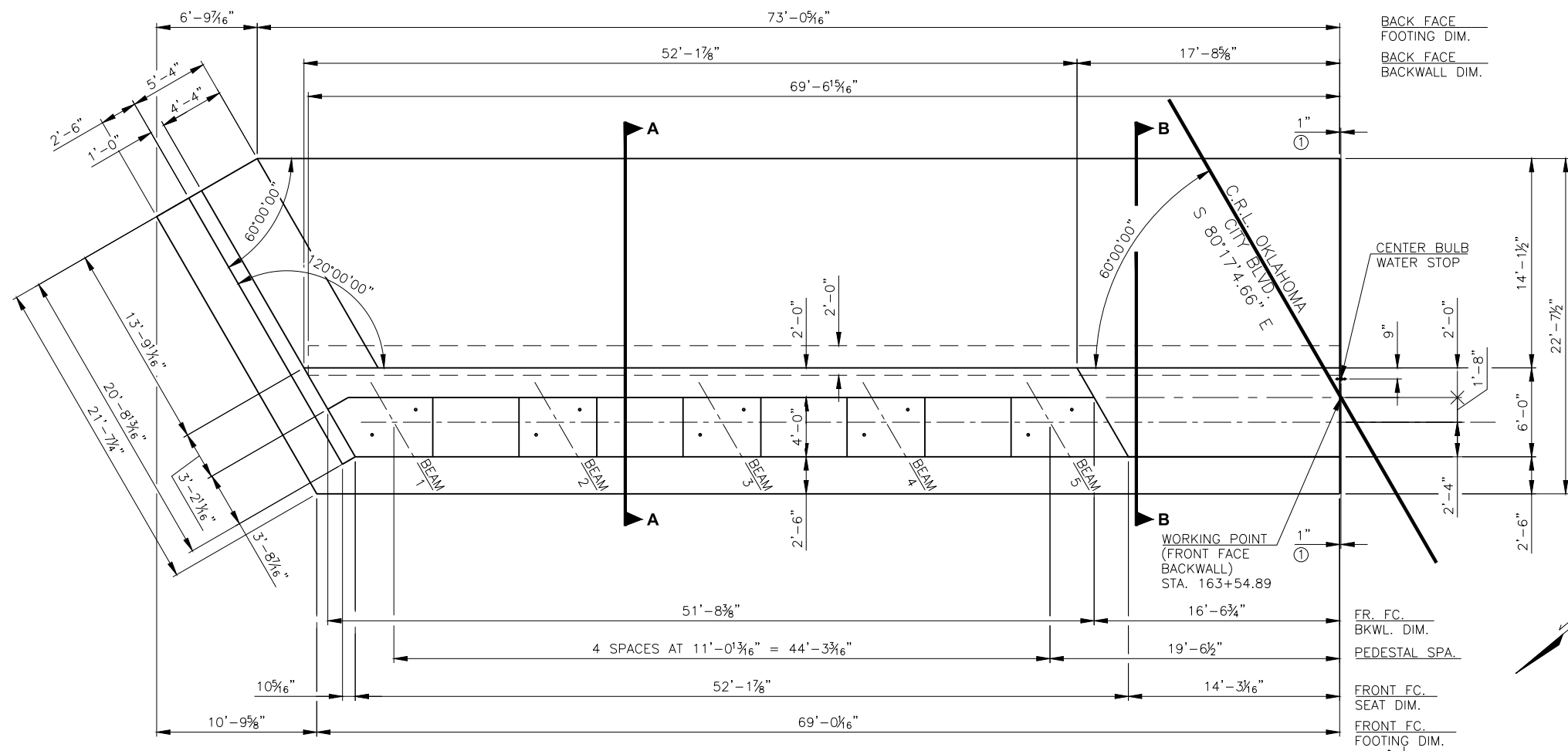


DESCRIPTION	REVISIONS	DATE



① 2" NOMINAL JOINT BETWEEN ADJACENT ABUTMENTS. SEE THIS SHEET FOR DETAILS.

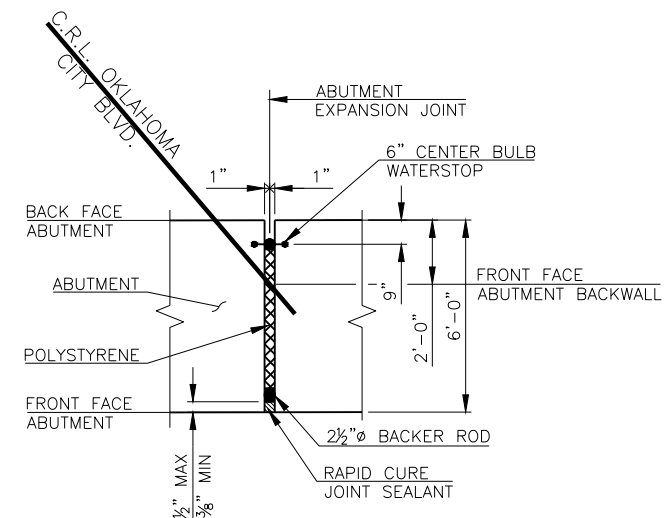
NOTES:  
ALL COST TO PROVIDE AND INSTALL CENTERBULB WATERSTOP INCLUDED IN OTHER ITEMS OF WORK.

FOR SECTIONS A-A AND B-B, SEE SHEET 115.

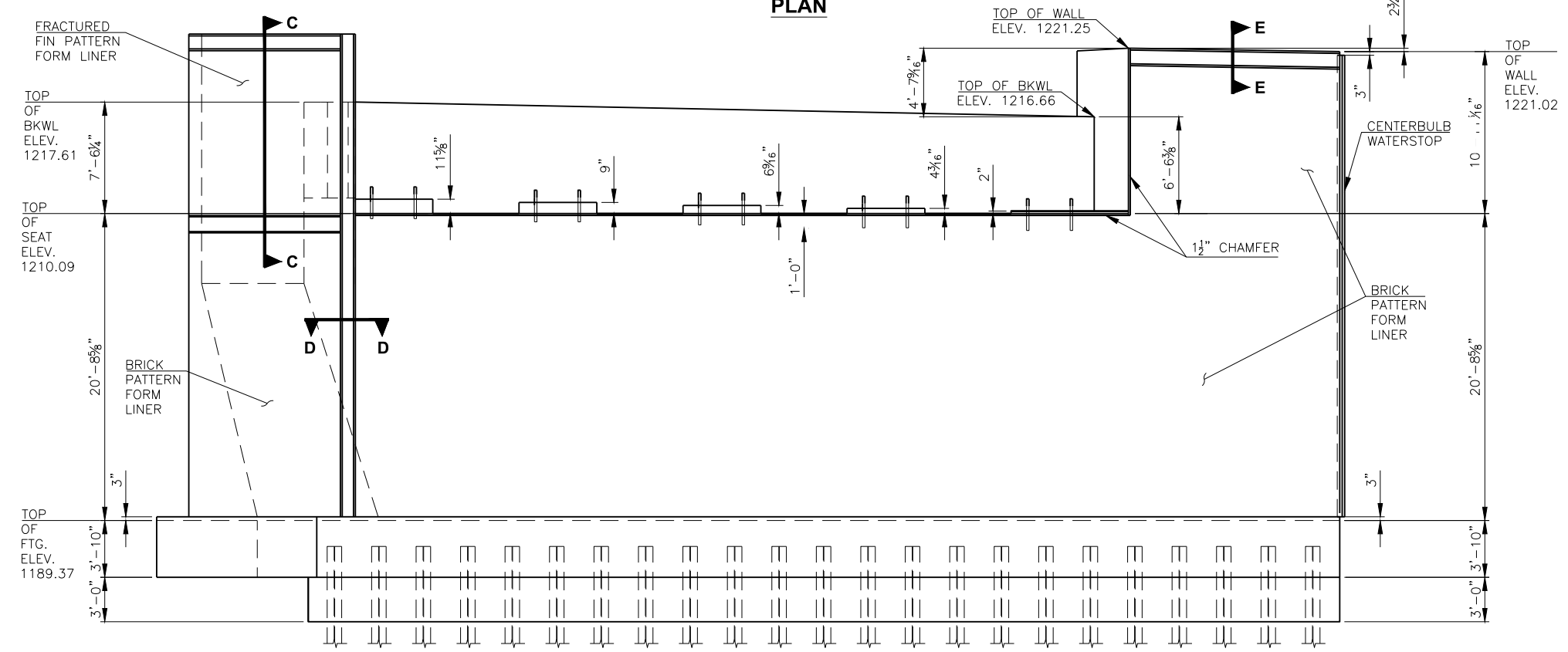
FOR FORM LINER DETAILS AND SPECIAL CONCRETE FINISH NOTES, SEE SHEETS 137-139.

NOTE:  
INSTALL BACKER ROD AND RAPID CURE JOINT SEALANT BETWEEN BRIDGE ABUTMENTS IN THE FRONT VERTICAL AND TOP HORIZONTAL EDGES OF THE JOINT. ALL COST OF CENTER BULB WATER STOP, POLYSTYRENE, BACKER ROD, AND RAPID CURE JOINT SEALANT, INCLUDING LABOR, MATERIALS, AND INCIDENTALS NECESSARY TO DO THE WORK, SHALL BE INCLUDED IN OTHER ITEMS OF WORK.

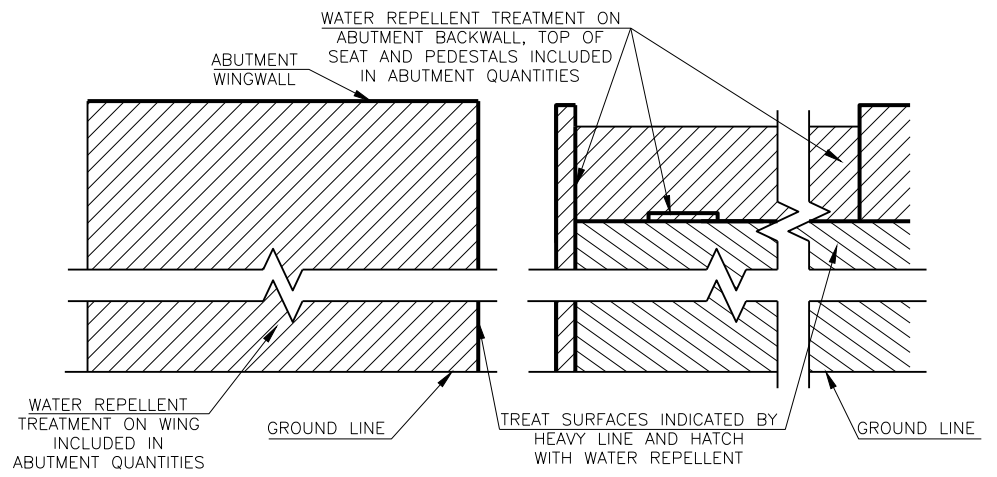
BACK FACE BACKWALL  
FRONT FACE BACKWALL  
CENTERLINE BEARING  
FRONT FACE OF SEAT  
FRONT FACE OF FOOTING



ABUTMENT JOINT DETAIL



ELEVATION



WING ELEVATION

SEAT ELEVATION

ABUTMENT  
WATER REPELLENT TREATMENT  
DETAILS

DESIGN	T.A.C.	OKLAHOMA CITY BLVD. OVER	OKLAHOMA COUNTY
DRAWN	R.A.P.	CLASSEN BLVD.	BRIDGE B
CHECKED	T.A.C.	<b>ABUTMENT NO. 2 - PLAN AND ELEVATION</b>	
APPROV.	T.A.C.		
SQUAD	CEC		
		JOB PIECE NO. 17428(88)	SHEET NO. 112